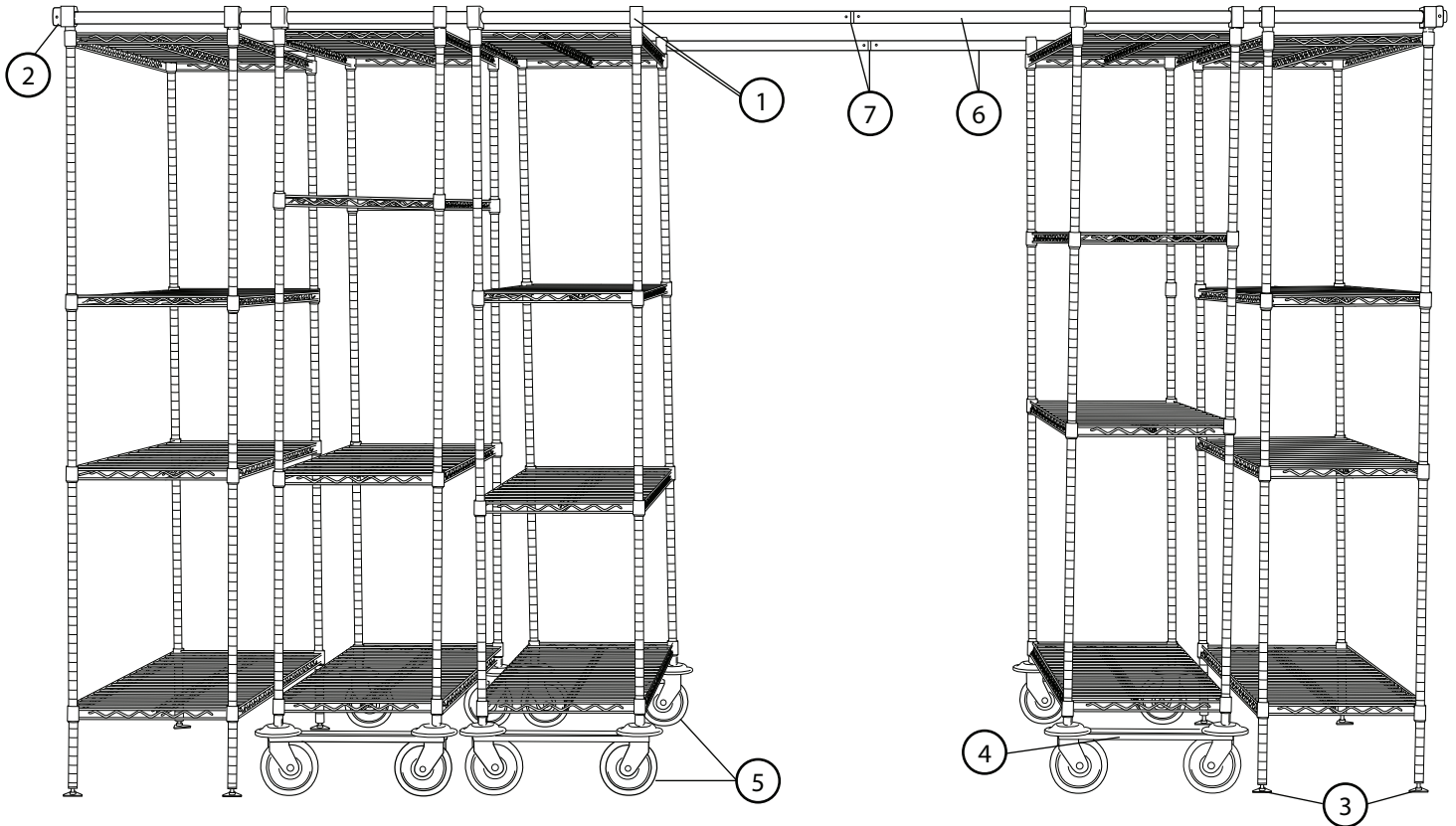
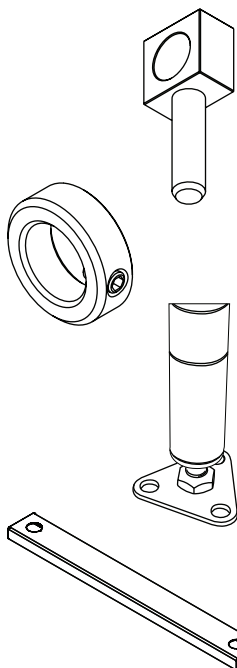


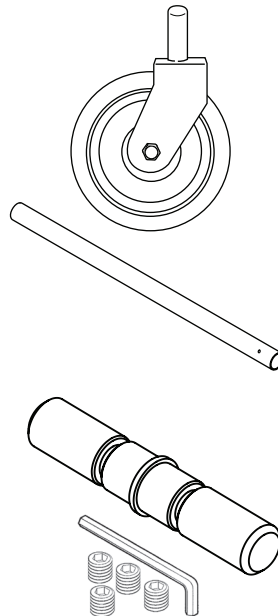
Two people required for assembly. Read All Instructions & Tips before assembly.



Core HDS-PlusTM System Components (Full Component Checklist located at end of document)



1. **FTSGB** (Guide Blocks) Used at tops of posts to guide mobile units on track.
2. **FTSLC** (Locking Collars) Used on stationary units to lock in track position. Each set of collars includes (1) allen wrench
3. **FTSFZ** (Triangular Security Feet) Used to anchor stationary units to the floor.
4. **FTSU18, FTSU21, FTSU42** (Caster Channels) Aligns casters on mobile units.



5. **FTSC6** (6" Casters w/ Bumpers)- Smooth rolling casters for mobile units. Bumpers prevent collision of units.
6. **FTST2, FTST3, FTST5** (Stainless Steel Track Tubing) Used at tops of units to allow movement of mobile units on track.
7. **FTSJ2** (Track Joiner Connectors) Each set includes (2) Track Joiner Connectors, (1) allen wrench and (2) sets of (4) stainless steel hexhead set screws to be used to connect each track tube. {FTST2, FTST3, FTST5}.

ASSEMBLY INSTRUCTIONS

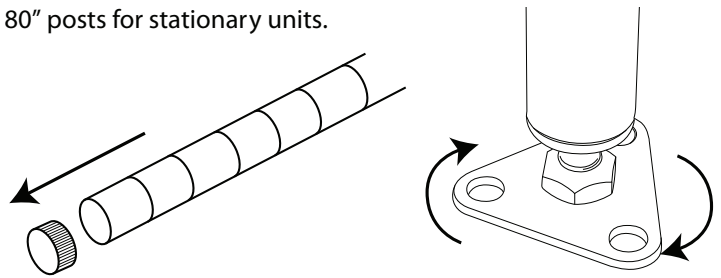
INSTALLATION TIPS

- 1 Two or more people are required for installation.
- 2 Stationary end unit should be used for heavier item storage.
- 3 If all shelving units are not the same width, the wider units should always be used as the stationary units.
- 4 Guide blocks, when inserted into the tops of posts, must be free to move up or down to adjust to uneven floors (see illustration)- on page 3.
- 5 Locking collars must be used for each stationary unit.
- 6 HDS-Plus system should only be used on hard surface.
- 7 For added stability, it is recommended that the bottom shelf is installed no more than 6" from the floor and the top shelf no more than 6' (2 – 3 lines) from the top – for all shelving units in the system.

PART 1: TRIANGLE SECURITY FOOT ASSEMBLY Use 80" posts for stationary units.

Step 1 Remove black plastic post caps from top of all posts (See illustration).

Step 2 First unscrew the leveling bolt and then screw in a Triangular Security Foot (FTSFZ) into a 80" post (FG080CH or FG080GN). Turn clockwise until foot is secure in post.



PART 2: ASSEMBLE SHELVING UNITS

Note: Please dispose of loose, round white plastic pieces in shelving boxes. These are used to separate the shelves for shipping purposes only.

Helpful Hint: When placing the plastic tapered sleeves onto the posts (Step 1), slide the plastic tapered sleeves up or down on the post until you feel it "snap" into the lines or grooves of the post. It is normal to have a slight gap in-between the two pieces of the plastic tapered sleeves when it is placed on the post.

Step 1 Choose the desired height of the bottom shelf for added stability, it is recommended that the bottom shelf is installed no more than 6" from the floor and the top shelf no more than 6' from the top.

Snap two (2) plastic tapered sleeves, with the arrows facing up, at the desired height on each post. (See Diagram #1) Shelves can be adjusted every 1" (Note: double grooves in the posts are placed every 8th groove for simple shelf height reference. Posts are numbered in even number increments).

Step 2 Place shelf on its side, making sure the wider portion of the four (4) round shelf collars are facing the bottom of the unit. Slide the top of the posts through the round shelf collars on each corner of the shelves. Push the shelves firmly onto the plastic tapered sleeves. (See Diagram #2) After installing the bottom shelf, set the unit upright.

DIAGRAM 1

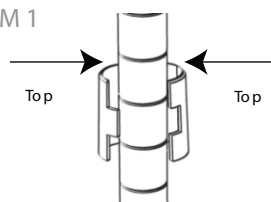
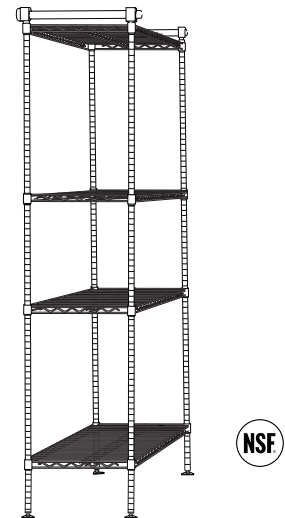
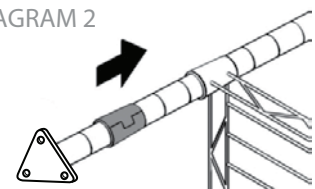


DIAGRAM 2



Step 3 For remaining shelves, snap the plastic tapered sleeves into place on posts at the next desired shelf height. Slide the shelf down from the top of the posts onto the plastic tapered sleeves and repeat this step for the remaining shelves.

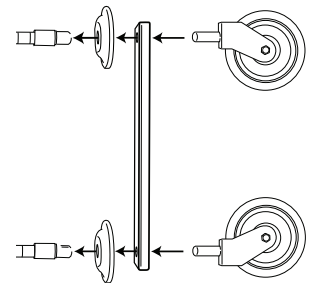
NOTE: HEAVY OBJECTS MUST BE PLACED--NOT DROPPED--ONTO THE SHELVES!!

Note: When all shelf heights are established, a rubber mallet may be used to tap each corner of the shelves so they firmly install onto the plastic tapered sleeves.

Note: The triangle leveling feet may need to be adjusted in order to make the unit level.

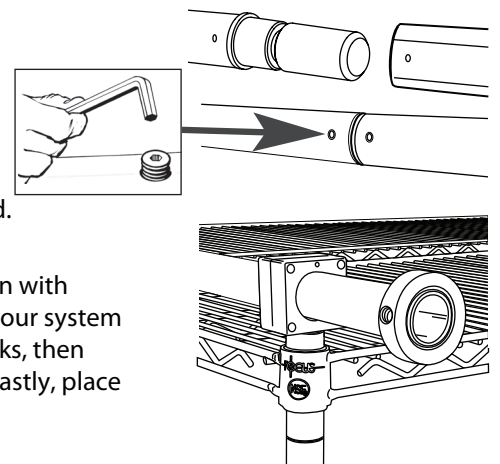
PART 3: CASTER ASSEMBLY OR MOBILE POST ASSEMBLY. Use 74" mobile posts.

- Step 1** Lay completed shelving unit(s) with 74" posts on their side.
- Step 2** With the opening of the bumper facing towards the bottom, slide bumper over bottom of posts.
- Step 3** Install 6" Casters (FTSC6 - CASTER MUST POINT INWARD AS SHOWN) through openings in caster channels (FTSU18,FTSU21 or FTSU24).
- Step 4** Install caster/caster channel assembly into 74" posts (FGN074C or FGN074G) until caster fit is tight. If needed, use a rubber mallet and tap bottom of caster to drive casters into posts. Repeat process for all mobile shelving units.



PART 4: OVERHEAD TRACK ASSEMBLY

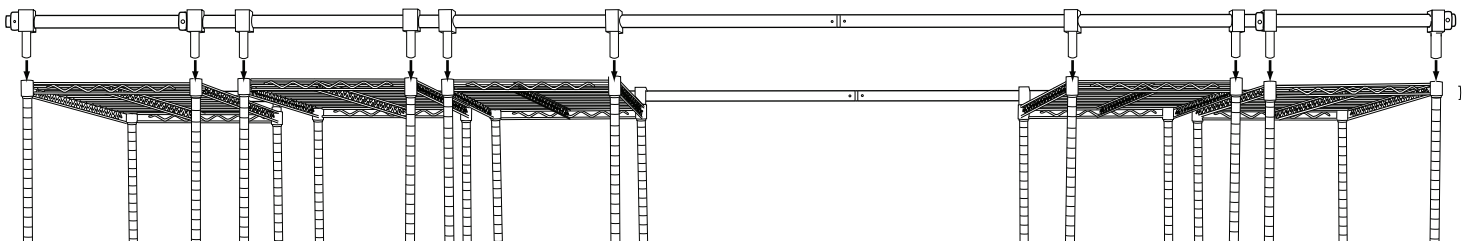
- Step 1** Connect track tube lengths using track joiners. To connect tubes with track joiners insert track joiner into tube section until it stops. Insert other end of track joiner into second tube until it stops. Using an ALLEN WRENCH, tighten hexhead set screws on top & bottom of each tube until flush with tube. Repeat process until both sections of track are assembled.
- Step 2** Place locking collar on one end of fully assembled track length and tighten with ALLEN WRENCH wrench. Slide on guide blocks for each shelving post. (If your system requires a stationary middle unit, slide on locking collar then 2 guide blocks, then second locking collar. Do not tighten inner locking collars at this point.) Lastly, place locking collar on open end of tube and tighten with ALLEN WRENCH. Repeat with second section of track.



PART 5: INSTALL TRACK ASSEMBLY ONTO SHELVING UNITS

- Step 1** Line up Shelving Units in a straight line in the area where the unit will be installed. Allow a minimum of 30" of open aisle space for each system. Bumpers add a minimum of 3" to the width of the mobile units. Place stationary units on the outside and middle (as needed**) and mobile units on the inside. To ensure smooth movement of mobile sections take great care that all shelving units are aligned in a straight line.

Note: Track lengths over 20 ft in length require a stationary unit in the middle of the system.



- Step 2** Using two or more people, raise one section of track assembly over tops of posts and starting on one end of shelving run. Insert guide blocks into tops of posts. Continue to opposite end. Repeat process with second section of track. Recheck shelving sections to ensure they are in straight alignment. To adjust for uneven floor surfaces, turn triangle security feet on stationary posts (clockwise or counter-clockwise). For systems with stationary units in the middle of the track, tighten down the locking collars surrounding these units.

ASSEMBLY INSTRUCTIONS

FULL HDS-PLUS SYSTEM COMPONENT CHECKLIST

Please use this reference checklist to ensure that you have all the components necessary to assemble your HDS-Plus shelving system.

BASE HDS-PLUS COMPONENTS

Kit Item #	Desc	Qty.
Kit Component #		
FTSSU	Stationary Unit Kit	
FTSFZ	Triangular Security Feet, Zinc 4/Pkg	1
FTSGB	Guide Blocks, Set of 4	1
FTSLC	Locking Collars, Set of 4 w/ allen wrench & set of screws	1
FTSMU18	Mobile Unit Kit 18 In.	
FTSC6	6 In. Casters W/ Bumpers, Set of 4	1
FTSGB	Guide Blocks, Set of 4	1
FTSU18	18 In. Caster Channels, Set of 2	1
FTSMU21	Mobile Unit Kit 21 In.	
FTSC6	6 In. Casters W/ Bumpers, Set of 4	1
FTSGB	Guide Blocks, Set of 4	1
FTSU21	21 In. Caster Channels, Set of 2	1
FTSMU24	Mobile Unit Kit 24 In.	
FTSC6	6 In. Casters W/ Bumpers, Set of 4	1
FTSGB	Guide Blocks, Set of 4	1
FTSU24	24 In. Caster Channels, Set of 2	1
FTSTK6	Track Set 6 Ft.	
FTST3	3 Ft.Track Tube, Set of 2	2
FTSJ2	Track Joiner, Set of 2 w/ allen wrench & set of screws	1
FTSTK7	Track Set 7 Ft.	
FTST5	5 Ft.Track Tube, Set of 2	1
FTST2	2 Ft.Track Tube, Set of 2	1
FTSJ2	Track Joiner, Set of 2 w/ allen wrench & set of screws	1
FTSTK8	Track Set 8 Ft.	
FTST5	5 Ft.Track Tube, Set of 2	1
FTST3	3 Ft.Track Tube, Set of 2	1
FTSJ2	Track Joiner, Set of 2 w/ allen wrench & set of screws	1
FTSTK9	Track Set 9 Ft.	
FTST5	5 Ft.Track Tube, Set of 2	1
FTST2	2 Ft.Track Tube, Set of 2	2
FTSJ2	Track Joiner, Set of 2 w/ allen wrench & set of screws	2
FTSTK10	Track Set 10 Ft.	
FTST5	5 Ft.Track Tube, Set of 2	2
FTSJ2	Track Joiner, Set of 2 w/ allen wrench & set of screws	1
FTSTK11	Track Set 11 Ft.	
FTST5	5 Ft.Track Tube, Set of 2	1
FTST3	3 Ft.Track Tube, Set of 2	2
FTSJ2	Track Joiner, Set of 2 w/ allen wrench & set of screws	2

Kit Item #	Desc	Qty.
Kit Component #		
FTSTK12	Track Set 12 Ft.	
FTST5	5 Ft.Track Tube, Set of 2	2
FTST2	2 Ft.Track Tube, Set of 2	1
FTSJ2	Track Joiner, Set of 2 w/ allen wrench & set of screws	2
FTSTK13	Track Set 13 Ft.	
FTST5	5 Ft.Track Tube, Set of 2	2
FTST3	3 Ft.Track Tube, Set of 2	1
FTSJ2	Track Joiner, Set of 2 w/ allen wrench & set of screws	2
FTSTK14	Track Set 14 Ft.	
FTST5	5 Ft.Track Tube, Set of 2	2
FTST2	2 Ft.Track Tube, Set of 2	2
FTSJ2	Track Joiner, Set of 2 w/ allen wrench & set of screws	3
FTSTK15	Track Set 15 Ft.	
FTST5	5 Ft.Track Tube, Set of 2	3
FTSJ2	Track Joiner, Set of 2 w/ allen wrench & set of screws	2
FTSTK16	Track Set 16 Ft.	
FTST5	5 Ft.Track Tube, Set of 2	2
FTST3	3 Ft.Track Tube, Set of 2	2
FTSJ2	Track Joiner, Set of 2 w/ allen wrench & set of screws	3
FTSTK17	Track Set 17 Ft.	
FTST5	5 Ft.Track Tube, Set of 2	3
FTST2	2 Ft.Track Tube, Set of 2	1
FTSJ2	Track Joiner, Set of 2 w/ allen wrench & set of screws	3
FTSTK18	Track Set 18 Ft.	
FTST5	5 Ft.Track Tube, Set of 2	3
FTST3	3 Ft.Track Tube, Set of 2	1
FTSJ2	Track Joiner, Set of 2 w/ allen wrench & set of screws	3
FTSTK19	Track Set 19 Ft.	
FTST5	5 Ft.Track Tube, Set of 2	3
FTST2	2 Ft.Track Tube, Set of 2	2
FTSJ2	Track Joiner, Set of 2 w/ allen wrench & set of screws	4
FTSTK20	Track Set 20 Ft.	
FTST5	5 Ft.Track Tube, Set of 2	4
FTSJ2	Track Joiner, Set of 2 w/ allen wrench & set of screws	3
FTSTK21	Track Set 21 Ft.	
FTST5	5 Ft.Track Tube, Set of 2	3
FTST3	3 Ft.Track Tube, Set of 2	2
FTSJ2	Track Joiner, Set of 2 w/ allen wrench & set of screws	4

POSTS (Requires 4 posts per shelving unit.

Item No.	Qty.	Length
Chromate		
	Post Type	(in) (mm)
FG080CH	Stationary	80 2032
FGN074C	Mobile	74 1880

Item No.	Qty.	Length
Green Epoxy		
	Post Type	(in) (mm)
FG080GN	Stationary	80 2032
FGN074G	Mobile	74 1880

*Select from stationary or mobile depending on location within the HDS-PLUS Storage unit.)

SHELVING Chromate Shelving for dry storage applications only. Green Epoxy and FPS-PLUS acceptable for wet / cold storage.

Item No.	Qty.	Item No.	Qty.	Item No.	Qty.	Item No.	Qty.	Width	Length
Chromate		GreenEpoxy		FPS-PLUS (vented)		FPS-PLUS (solid)		(in) (mm)	(in) (mm)
FF1824C		FF1824G		FF1824VNGN		FF1824SOGN		18 455	24 610
FF1830C		FF1830G		FF1830VNGN		FF1830SOGN		18 455	30 760
FF1836C		FF1836G		FF1836VNGN		FF1836SOGN		18 455	36 910
FF1842C		FF1842G		FF1842VNGN		FF1842SOGN		18 455	42 1060
FF1848C		FF1848G		FF1848VNGN		FF1848SOGN		18 455	48 1220
FF1854C		FF1854G		FF1854VNGN		FF1854SOGN		18 455	54 1370
FF1860C		FF1860G		FF1860VNGN		FF1860SOGN		18 455	60 1525
FF1872C		FF1872G		FF1872VNGN		FF1872SOGN		18 455	72 1825
FF2124C		FF2124G		FF2124VNGN		FF2124SOGN		21 530	24 610
FF2130C		FF2130G		FF2130VNGN		FF2130SOGN		21 530	30 760
FF2136C		FF2136G		FF2136VNGN		FF2136SOGN		21 530	36 910
FF2142C		FF2142G		FF2142VNGN		FF2142SOGN		21 530	42 1060
FF2148C		FF2148G		FF2148VNGN		FF2148SOGN		21 530	48 1220
FF2154C		FF2154G		FF2154VNGN		FF2154SOGN		21 530	54 1370
FF2160C		FF2160G		FF2160VNGN		FF2160SOGN		21 530	60 1525
FF2172C		FF2172G		FF2172VNGN		FF2172SOGN		21 530	72 1825
FF2424C		FF2424G		FF2424VNGN		FF2424SOGN		24 610	24 610
FF2430C		FF2430G		FF2430VNGN		FF2430SOGN		24 610	30 760
FF2436C		FF2436G		FF2436VNGN		FF2436SOGN		24 610	36 910
FF2442C		FF2442G		FF2442VNGN		FF2442SOGN		24 610	42 1060
FF2448C		FF2448G		FF2448VNGN		FF2448SOGN		24 610	48 1220
FF2454C		FF2454G		FF2454VNGN		FF2454SOGN		24 610	54 1370
FF2460C		FF2460G		FF2460VNGN		FF2460SOGN		24 610	60 1525
FF2472C		FF2472G		FF2472VNGN		FF2472SOGN		24 610	72 1825